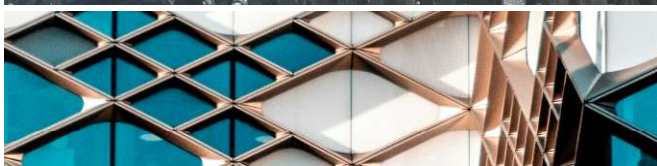
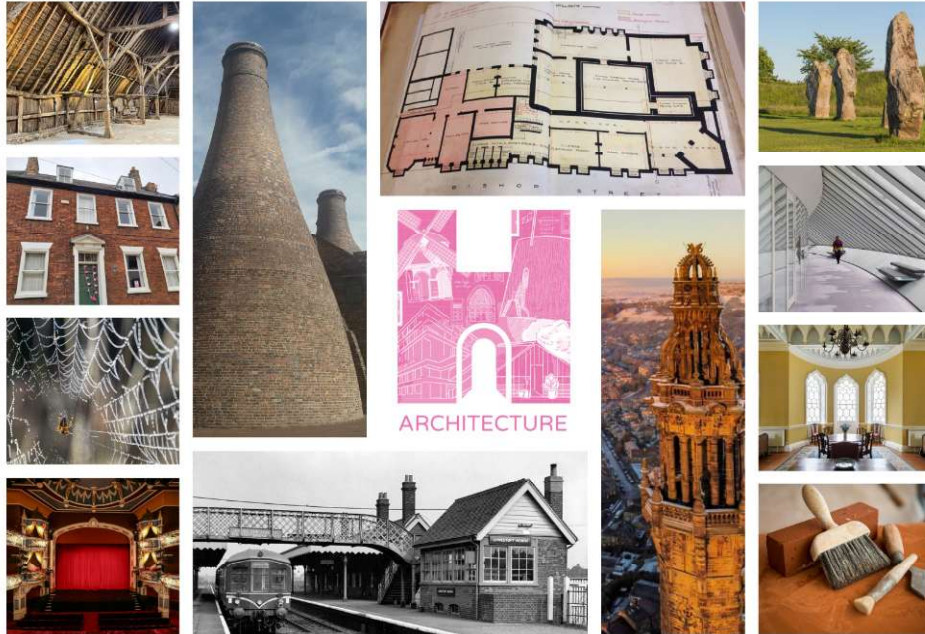


12 - 21 September 2025
Free to explore!



heritage  open days

Sheffield
Civic
Trust



This year's optional theme for Heritage Open Days is '**Architecture**', and we have plenty of wonderful buildings and structures to showcase here in Sheffield. We have events at three Grade I listed buildings in the city – Sheffield Town Hall, Abbeydale Industrial Hamlet, and St Mary's Church Ecclesfield: buildings which are all considered to be of exceptional historical interest and national importance.

It's great to see Sheffield's former heritage buildings being repurposed and you can see examples of this at Leah's Yard, Beehive Works and Canada House where former industrial and commercial buildings are being given a new lease of life for the 21st century.

The many churches, chapels and other places of worship taking part in HODs across our area provide a great opportunity to compare architecture and design styles from medieval times to the present day. Why not pop into the elegant Cutlers' Hall with its impressive Corinthian columns. or is the sleek eco-friendly design of 'The Wave' building at the University of Sheffield more your style?

Architecture can tell us a lot about the past and pose some interesting questions. As you visit our architectural highlights, ask yourself: who built this and who commissioned and designed it? Why was it built and has its purpose changed over time? What skills and materials were used and do these reflect the local environment or have they come from further afield? And is it useful or has it just become a familiar landmark?

Do let us know what your favourite Sheffield architectural highlights are!



Welcome to Sheffield Heritage Open Days 2025!

A warm welcome to England's largest festival of history and culture; your chance to explore hidden places and try our new experiences – all of which are FREE to explore.

Sheffield's annual Heritage Open Days (HODs) festival is made possible thanks to the many dedicated local friends' groups and history enthusiasts, most of whom are volunteers, who support our city's heritage sites, galleries, libraries, museums, churches, green spaces, rivers and historic buildings, and whose hard work means that so many wonderful venues are able to open up across the city during the ten days of the festival, allowing everyone to access our area's rich heritage for free.

Sheffield Heritage Open Days is coordinated by Sheffield Civic Trust, a registered charity which encourages public awareness and appreciation of our city's heritage, places and spaces. We receive no statutory funding to support Heritage Open Days in Sheffield and so we are grateful to Sheffield City Council, the University of Sheffield and the J G Graves Charitable Trust for their financial support of Heritage Open Days 2025, which has enabled us to produce this free brochure and to maintain our website, commission a promotional video, and to coordinate the festival across the city. Do take a look at our new video at www.sheffieldhods.com and see if there's anywhere (or anyone) you recognise!

Enjoy planning your festival visits, and please note that this brochure was correct when we went to print in July 2025 – as always please check at www.heritageopendays.org.uk for the latest updates before setting off. You can also find a digital version of this brochure at www.sheffieldhods.com

Janet Ridler
Liz Godfrey
Margaret & John Blenkinsopp

Sheffield HODs Co-ordinating Team



Can you identify the nine buildings on the front cover of this year's brochure? If so, you could win a made in Sheffield 'Round Tuit' – see back page for details and how to enter!

For latest updates check: www.heritageopendays.org.uk

Events

This year, events have been organised into two sections:

- **Section 1 'Single Dates'** - Events which happen once (listed in date order.)
- **Section 2 'Multiple Dates'** - Events which happen more than once (listed in alphabetical order.)

Single dates

Friday 12th September

1. A walk round Attercliffe

Attercliffe Supertram Stop, Shortridge Street, Sheffield, South Yorkshire, S9 3SH

The Lower Don Valley was the powerhouse of Sheffield's heavy steel industry and Attercliffe was where its workers lived. Though many buildings have disappeared what remains is a fascinating insight into the life of a once-thriving community.

1000-12-30 • Prebook by email
mike@mikehigginbottominterestingtimes.co.uk

2. Aizlewood's Mill Tour

Aizlewoods Mill, Nursery Street, Sheffield, South Yorkshire, S3 8GG

Guided tours of Aizlewood's Mill and much of the historical flour milling equipment on show.

Tours at 1000, 1100, 1200, 1400, 1500
Prebook by email: reception@aizlewoodsmill.com

3. Ernest Wright scissor makers - a century of knowledge, passion and character

Town Hall, Pinstone Street, Sheffield, South Yorkshire, S1 2HH

Discover Ernest Wright's background, Sheffield's

renowned scissor making history, the evolution of our manufacturing practices and the enduring joy of making scissors today in this talk by Jonathan Reid

1400-1530 • Prebook via [Eventbrite](#)

4. Hawley Collection

Kelham Island Museum Alma Street, Sheffield, South Yorkshire, S3 8RY

An opportunity to see original trade catalogues, photographs and design documents from the Ken Hawley Archive celebrating the rich history and heritage of Sheffield's light trade companies.

1100-1500 • Prebooking not required.

5. Holy Trinity now New Testament Church of God

1 Johnson Street, Sheffield, South Yorkshire, S3 8GT

The New Testament Church of God was originally Holy Trinity Wicker Church. It was built in 1847 and consecrated by the Archbishop of York in October 1848. It is a Grade II Listed Building.

1000-1500 • Prebooking not required.

6. Loxley Cemetery - The Chapel

Loxley Road, Sheffield, South Yorkshire, S6 6RW

Visit a 200+ year old chapel & adjacent cemetery set in 10 acres of hilly countryside in the beautiful Loxley Valley.

1100-1600 • Prebook for tours via [Eventbrite](#)



7. Old Head Post Office – behind the scenes tour

Fitzalan Square, Sheffield, South Yorkshire, S1 2AY

A chance to visit Sheffield's Edwardian Post Office, now the home of the Sheffield Creative Industries Institute at Sheffield Hallam University. Tour the city's original sorting office, telephone exchange and main post office counter.

1100-1200, 1300, 1400 • Prebook via [Eventbrite](#)

8. Sheffield Modernist Society Walking APP Launch

Market Place, Sheffield, South Yorkshire, S1 2GH

Explore and encounter some of Sheffield's modernist and brutalist architecture on a guided tour to accompany the launch of our free app.

1300-1500 • Prebook via [the-modernist.org](#)

9. Steel Town - Stocksbridge Heritage Walk

Fox Valley Way, Stocksbridge, Sheffield, South Yorkshire, S36 2AB

Join us for a guided walk around Stocksbridge in the beautiful Little Don valley, a town which has grown around the steelworks of Samuel Fox, founded in 1842, and many of the buildings are his legacy.

1400-1600 • Prebook via email ruthmorgan755@hotmail.com



10. The Victoria Hall Grand Reveal!

Norfolk Street, Sheffield, South Yorkshire, S1 2JB

The Victoria Hall Grand Reveal! Join us for an exclusive tour of Victoria Hall's history and architecture, finishing in the newly refurbished main hall for craft activities and our community market. Family friendly, refreshments available.

1400-1700 • Prebooking not required.

Saturday 13th September

11. Brightholmlee Chapel, Wharncliffe Side

252 Main Road, Wharncliffe Side, Sheffield, South Yorkshire, S35 0DQ

Visit this historic chapel dating from 1807 and learn about its fascinating history and that of the ancient village of Wharncliffe Side and surrounding hamlets.

1000-1300 • Prebooking not required.

12. Discover the history of our Church and its architecture

St Peter & St Paul, Main Road, Old Brampton, Chesterfield, Derbyshire, S42 7JG

Discover the history & secrets of this beautiful Grade I listed medieval church. With refreshments in the adjacent schoolroom, there's something for everyone.

1000-1600 • Prebooking not required.





13. Ecclesfield Parish Families Exhibition

Packhorse Lane, High Green, Sheffield, South Yorkshire, S35 3HY

A photographic exhibition about famous and popular families from Ecclesfield Parish throughout the years.

1000-1400 • Prebooking not required.

14. Green Open Spaces of Hillsborough

Stannington Road, Sheffield, South Yorkshire, S6 5FL

Join us for a walking tour around the community gardens and open spaces of Hillsborough, Malin Bridge, Wisewood, and Wadsley, whilst looking at the history of the area. The day will mark the launch of a walking trail project linking the sites.

1100-1300 • Prebooking not required.

15. Sheffield: A Civilised Place - discovery trail

Church Street, Sheffield, South Yorkshire, S1 1HA

A guided walk along an easy going city centre discovery trail. We will explore how engineering has developed the city of Sheffield. You will see diverse buildings and structures, ancient and modern, various forms of transport & bridges.

1100-1330 • Prebook via [Eventbrite](#)



16. St John's Ranmoor

5 Ranmoor Park Road, Sheffield, South Yorkshire, S10 3GX

Discover what the Scissors Paper Stone community history project learned about the nineteenth and early twentieth century residents of Ranmoor.

1400-1600 • Prebooking not required.

17. Wincobank Chapel and Iron Age Hillfort

132 Wincobank Avenue, Wincobank, Sheffield, South Yorkshire, S5 6BB

Visit the historic Wincobank Chapel, founded in 1841 as a village school by anti-slavery campaigner Mary Ann Rawson. Meet the Brigantes of Wincobank Hill and join a guided walk to Sheffield's Iron Age Hillfort.

12.00-1600, talks at 1230, 1330, 1530. Guided walk 1430 • Prebooking not required.

Sunday 14th September

18. Walls That Speak: The Architectural Heritage of Sheffield Manor Lodge

Sheffield Manor Lodge, The Discovery Centre, 197 Manor Lane, Sheffield, South Yorkshire, S2 1UJ

With over 450 years of history our walls have a story to tell. From humble beginnings as a hunting lodge, to a grand manor and royal prison for the captive Mary Queen of Scots. Discover our heritage through tours and children's trail.

Tours 1030 & 1300 • Prebook via: sheffieldmanorlodge.digitickets.co.uk

19. Green Moor Pump House

Green Moor Road, Sheffield, South Yorkshire, S35 7JA

A rare chance to see inside the pump house and descend the ladder to view the well!

1000-1400 • Prebooking not required.



20. Sheffield Home of Football Heritage Walking Tour

The Old Fire Station, 101-109 West Bar, Sheffield, South Yorkshire, S3 8PT

Explore some of the highlights of Sheffield's unique football heritage, including the world's two oldest clubs: Sheffield FC (1857) and Hallam FC (1860); the founding of SVFC, SUFC, Bramall Lane, Yorkshire Cricket Club & the 1858 Sheffield Rules.

1400-1530 • Prebook by email
j.p.wilson@sheffield.ac.uk

21. Sheffield's Victorian Centre, a guided walk with The Victorian Society

Sheffield Town Hall, Pinstone Street, Sheffield, South Yorkshire, S1 2HH

A 2 hour guided walk of Sheffield's Victorian Centre with Nigel Slack, Chair of The Victorian Society, South Yorkshire.

1430-1630 • Prebook via [Eventbrite](#)

22. The Eyre Chapel - a lookback in time

37 Newbold Village, Newbold Road, Chesterfield, Derbyshire, S41 8RJ

Open Day with a chance to learn more about this 13th Century building and historic grounds.

1200-1630 • Prebooking not required.

23. Zion Graveyard Attercliffe

Zion Graveyard, Lawrence Street, Attercliffe, Sheffield, South Yorkshire, S9 3RG

Visit the forgotten burial place of Victorian anti-slavery campaigner Mary Ann Rawson. Once part of an elaborate complex of community buildings the site was abandoned for twenty years until was saved from sale and re-development by volunteers.

Talks 1300, 1400, 1500, 1600 • Prebooking not required.

Monday 15th September

24. From Pigs to Pollen: the Lost Architecture of Sheffield's Markets in Castlegate

Exchange Street, Sheffield, South Yorkshire, S2

Join town planner and local historian Simon Ogden as he shares the many histories of the Castlegate Markets.

1230-1400 • Prebook via [Eventbrite](#)

25. Sheffield's Central Library: A History

Central Library, Surrey Street, Sheffield, South Yorkshire, S1 1XZ

Join us in the Local Studies Library to explore archive material showcasing the fantastic story of Sheffield's Central Library. The first Sheffield Library was founded in 1771 and moved to its current home in 1934.

1100-1500 • Prebook via [Eventbrite](#)

26. Whirlow Brook Park

Whirlow Brook Hall, Ecclesall Road South, Sheffield, South Yorkshire, S11 9QD

A 'walk and talk' around the beautiful gardens of Whirlow Brook Park discovering the history of the gardens, their owners and the plants growing in the park.

1100-1200 • Prebook by email
jsturner2020@btinternet.com





Tuesday 16th September

27. 'From Tip to Trail' a New Walking and Cycling Trail from Oughtibridge to Deepcar

Ash Close, Wharcliffe Side, Sheffield, South Yorkshire, S35 0BY

Explore the next planned route of the Upper Don Trail and safer links to the Trans Pennine Trail on a journey of contrasts between Wharcliffe Side and Deepcar.

1800-2000 • Prebook via [Eventbrite](#)

28. Broomhill Community Library - New Heritage Group for Broomhill's People, Places & Stories

Taptonville Road, Sheffield, South Yorkshire, S10 5BR

An informal gathering of local experts and interested residents to share their interest in Broomhill's heritage and to discuss forming a new local heritage group.

1100-1230 • Prebook by email
activities@broomhill-library.org.uk

29. Centenary of Official Opening of Painted Fabrics Ltd at Little Norton, Sheffield

Lees Hall Golf Club, Hemsworth Road, Sheffield, South Yorkshire, S8 8LL

Our display, talk and exhibition of items from Painted Fabrics Ltd celebrates the centenary of the official opening. It takes the story of Painted Fabrics from its origins during WWI through to its closure in 1959 and redevelopment in the 1960s.

1330-1600 & 1730-1930 • Prebook via our [website](#)

30. George Wolstenholm's Kenwood mansion

Kenwood Road, Sheffield, South Yorkshire, S7 1NQ

A short, guided walk organised by the Nether Edge Festival / History groups, around the grounds of the Kenwood Hall Hotel. We'll visit rooms in George Wolstenholm's 19th century house and learn about the building.

1830-1915 • Prebooking not required.

31. Harmony Works at Canada House: Tour and memory café

Canada House, 11 Commercial Street, Sheffield, South Yorkshire, S1 2AT

Guided tour of the Victorian grandeur of Canada House, once the headquarters of the Sheffield United Gas Light Company. Learn about its colourful history: its role in WWII; its reincarnation as an '80s nightclub; and then a Chinese Buffet in the 2000s

1200-1300 & 1800-1900 • Prebook at
<https://harmonyworks.org.uk/>

32. Kelham Island walking tour

Kelham Island Museum, Alma Street, Sheffield, South Yorkshire, S3 8RY

This guided walk brings to life one of Sheffield's first industrial districts. You'll discover its buildings, stories about its history, the successes and the tragedies of the people who made it what it is, and an insight into the place today.

1800-2000 • Prebook via [Eventbrite](#)

33. Stocksbridge Museum and Heritage Centre

Town Hall, Manchester Road, Stocksbridge, Sheffield, South Yorkshire, S36 2DT

This hidden gem of a museum houses a wealth of unique exhibits including a fabulous collection of Bolsterstone glassware & Midhope Pottery. Meet local experts and discover why Stocksbridge is the birthplace of the modern umbrella!

1000-1300 • Prebooking not required.

New for 2025...

and some old favourites

Every year we have a diverse range of Heritage Open Days events taking place across the Sheffield area, and we love to see an exciting mix of new venues and old favourites. Here a few highlights to whet your appetite...

If you are on the lookout for something new, head to the Old Head Post Office in Fitzalan Square to tour its old sorting office, telephone exchange & post office counter. The former royal prison of Mary Queen of Scots at Manor Lodge is opening up for HODs this year, and there is an exciting opportunity to descend the ladder into the well at the Green Moor Pump House! Why not tour the 19th century bank vaults underneath the Curzon Cinema, explore the old Abbeydale Picture House, or discover the faded Victorian splendour of Abbeyfield Park House and its extensive gardens?

New walks include an exploration of the city's brutalist architecture with the Modernist Society and a heritage walk around the steel town of Stocksbridge. You can discover the green open spaces of Hillsborough, the lost architecture of Castlegate, the stories behind the blue plaques of Woodseats, or learn about the city's fantastic street art.

We're delighted that many popular favourites are back including the famous 'Drainspotting' walking tour which looks at the history beneath our feet. There's a chance to see the 18th century crucible furnace which sits beneath a garage in Grenoside, and you can view the lost Victorian bath house at Birley Spa.

Discover the city's musical heritage at Yellow Arch Studios, or take a walk along the 'streets in the sky' at Park Hill flats. The Sheffield Hospitals Heritage Collection is a fascinating glimpse into the history of the city's hospitals, and at Beehive Works you can see traditional blade grinding taking place – living history within a heritage workshop.

This is just a flavour of what's on offer this year so do check out all our listings for more details and how to book, and enjoy Sheffield Heritage Open Days 2025!





34. The Wave

2 Whitham Road, Sheffield, South Yorkshire,
S10 2AH

Our world-class Social Sciences building brings together teaching and research from across the Faculty. An iconic building, part of the University of Sheffield.

Tours 1000, 1130, 1400, 1530 • Prebook by email foss.events@sheffield.ac.uk

Wednesday 17th September

35. Broomhill Community Library: Architectural Design - Conservation Principles in Practice

Taptonville Road, Sheffield, South Yorkshire, S10 5BR

Thread Architects will join Lucy Newport of Castree Structural Design for a lively and fascinating discussion on how architectural and structural designing can in practice secure the heritage of a building.

1900-2100 • Prebooking not required.



36. Broomhill Community Library - Broomfield Local History Walk

1 Beech Hill Road, Sheffield, South Yorkshire, S10 2SA

We shall walk around Broomfield and find out about some of the early inhabitants of Broomhill - steel manufacturers, solicitors, St Mark's Church and the early Rutland Hotel.

1330-1515 • Prebook via [Eventbrite](#)

37. Curzon Cinema Sheffield

16 George Street, Sheffield, South Yorkshire, S1 2PF

Guided tours of the 19th Century Bank Vaults that remain beneath the cinema.

1000-1500 • Prebook by email nigel.mcenaney@curzon.com

38. Evening Talk: Behind the Scenes at Abbeydale Industrial Hamlet

Abbeydale Road South, Sheffield, South Yorkshire,
S7 2QW

Join us to explore this nationally significant, water-powered steel and scythe works after hours and hear our most recent discoveries about this remarkable historic site.

1800-1900

Prebook via [Eventbrite](#)

39. Harmony Works at Canada House: From dream to reality – the vision for Canada House

Canada House, 11 Commercial Street, Sheffield, South Yorkshire, S1 2AT

Delve into the architectural story of Canada House with this one-off extended tour and talk with architects Tom Moore, who's been involved in the Harmony Works project from its very beginning and Matt Beaumont, Conservation Architect for the project.

1630-1800 • Prebook via [Eventbrite](#)



40. Parkwood Springs - from Deer Park to Country Park

Parkwood Springs Car Park, Shirecliffe Road, Sheffield, South Yorkshire, S5 8XB

See the best views in Sheffield and hear how a medieval deer park provided materials for industry, a home for workers, a dump for waste and a platform for guns. But now the deer are back and Parkwood Springs is set to be our country park in the city.

1730-1930 • Prebooking not required.

41. Stan Shaw - Sheffield Cutler and 'Little Mester': an Illustrated Talk by Andy Kershaw

Kenwood Road, Sheffield, South Yorkshire, S7 1NQ

An illustrated talk about legendary Sheffield knife-maker and 'Little Mester' Stan Shaw who made exquisitely beautiful handmade pen and pocket knives for almost 80 years and worked for some of the most famous cutlery companies.

1930-2045 • Prebooking not required.

42. Woodseats History Trail

5 Holmhurst Road, Sheffield, South Yorkshire, S8 0GU

Discover the fascinating history of Woodseats on this guided tour of its 12 blue plaques.

1100-1230 • Prebook by email from 21 August
martingnaylor1955@gmail.com



Thursday 18th September

43. Barnsley Main Heritage Site

Oaks Lane, Barnsley, South Yorkshire, S71 1HS

Barnsley Main Heritage Group volunteers will be on site with informative and interesting walks, talks and artefacts related to the site and local coal mining history. Visit our on-site pop-up-museum, read numerous information boards.

1000-1300 • Prebooking not required.

44. Broomhill Community Library - Designing for People, Landscape and Heritage

Taptonville Road, Sheffield, South Yorkshire, S10 5BR

Landscape Architect Ollie Pike will talk about some of his latest projects that connect people, place and heritage including the Percy Cane Heritage Garden and National Trust garden at Lyveden Manor.

1900-2100 • Prebooking not required.

45. Broomhill Community Library - Iconic & Bygone Illustrations of Sheffield

Taptonville Road, Sheffield, South Yorkshire, S10 5BR

An illustrated talk and exhibition by artist Greg Harris of the familiar iconic architectural landmarks, past and present, across the city of Sheffield.

1030-1200 • Prebooking not required.





46. From Kelham to the World's End

Alma Street/Kelham Street, Sheffield, South Yorkshire, S3 8SA

Follow the river along the emerging Upper Don Trail, and discover some of Sheffield's most distinctive industrial architecture both in decay and regeneration, plus bags of hidden history, a haunting cemetery, quirky characters & natural beauty.

1800-2000 • Prebook via [Eventbrite](#)

47. Pub Heritage and Industrial relics guided walk

105 Neepsend Lane, Sheffield, South Yorkshire, S3 8AT

This guided walk of less than a mile will introduce you to aspects of both the pub/beer and industrial heritage of Neepsend. Your walk leader is Dave Pickersgill, editor of several Sheffield-based Pub Heritage publications.

1600-1730 • Prebook at <https://tckty.camra.org.uk>

48. Sylvia Dunkley Talk: Frank Tory, Master Sculptor in Stone and Wood

45 Carver Street, Sheffield, South Yorkshire, S1 4FT

Sylvia Dunkley Talk: Frank Tory, Master Sculptor in Stone and Wood, with particular reference to St Matthew's, Carver Street and St John's, Ranmoor.

1400-1530 • Prebook via [Eventbrite](#)



49. The Great Sheffield Deer Park Boundary Walk

(Bus stop in front of Lidl) Castlebeck Avenue, Sheffield, South Yorkshire, S2 1DS

A historical exploration of the largest private Deer Park in England.

1030-1400 • Prebook via [Eventbrite](#)

Friday 19th September

50. Little Chicago - Heritage and History walk

48 West Bar, Sheffield, South Yorkshire, S3 8PH

A guided historical/pub walk in Little Chicago, Sheffield.

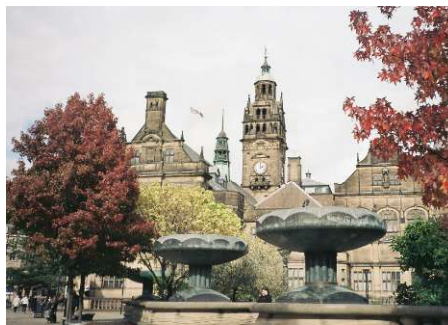
1430-1600 • Prebook via <https://tckty.camra.org.uk>

51. Sheffield Town Hall 'Behind the Scenes' Tour

Town Hall, Pinstone Street, Sheffield, South Yorkshire, S1 2HH

Take a guided tour of this Grade I listed building with the Council's Heritage Champion Cllr Janet Ridler, see some of its fine Victorian chambers, meeting rooms and architecture, and hear the stories of its famous visitors and civic dignitaries.

1030-1145 • Prebook via [Eventbrite](#)





Saturday 20th September

52. A Taste of the Rivelin

Rivelin Park Cafe, Rivelin Park Road, Sheffield, South Yorkshire, S6 5FE

An introduction to the foraging present and industrial past of the Rivelin. Led by Siobhan (Shony's Mushrooms) and Calvin (Hidden Sheffield Walks), we will explore edible fungi and flora alongside the remnants of water-powered industry.

Tours 1100, 1300, 1500 • Prebooking not required.

53. CWGC Tours 2025 - Rotherham (Moorgate) Cemetery

14 Boston Castle Grove, Rotherham, South Yorkshire, S60 2BA

Join the Commonwealth War Graves Commission for a tour of Rotherham (Moorgate) Cemetery.

1030-1200 • Prebook via website
<https://www.cwgc.org/>

54. Cutlers' Hall

The Cutlers' Hall, 7-15 Church Street, Sheffield, South Yorkshire, S1 1HG

An opportunity to walk round this private building in Sheffield's city centre, which has links to Sheffield's core industries of cutlery and steel. Its displays are stunning and inspirational.

Tours every half hour from 1030-1630 • Prebooking not required.



55. Eckington Church: where it all began

St Peter and St Paul's Church, Church Street, Eckington, Derbyshire, S21 4BH

The Parish Church has been the centre for church and civic life in Eckington for centuries. Learn how the building has changed over time and explore its history with optional guided church tours and visits to the bell ringing chamber and tower.

1030-1630 • Tours can be booked inside the church on the day.

56. Geological Ramble in the Porter Valley

311 Brincliffe Edge Road, Sheffield, South Yorkshire, S11 9DE

Was coal ever extracted in the Porter Valley? Find out on this geological ramble led by three retired geologists.

1400-1630 • Prebook by email
iangprior@gmail.com

57. Harmony Works at Canada House: Concerteenies Under the Dome

Canada House, 11 Commercial Street, Sheffield, South Yorkshire, S1 2AT

Join Concerteenies and musician James Lyons for musical family fun under the dome at Canada House.

1400-1500 • Prebook via [Eventbrite](#)





58. Rotherham Chapel on the Bridge

Bridge street, next to Rotherham Bus Station, Rotherham, South Yorkshire, S60 1RB

We aim to show a "then and now" presentation of how the town centre architecture has changed over the years and a quiz on certain features still on show.

1030-1400 • Prebooking not required.

59. St Mary's Church Walkley

Howard Road, Walkley, Sheffield, South Yorkshire, S6 3RX

St Mary's Church is joining 4 other buildings in Walkley by opening its doors and bell tower to celebrate the design, construction and history of the church and the adjoining school.

1000-1600 • Prebooking not required.

60. St Paul's Wordsworth Avenue

Wordsworth Avenue, Sheffield, South Yorkshire, S5 9JH

A Grade II Listed building, designed by Sir Basil Spence, is open with refreshments available throughout the day. There'll be talks at 11am and 1pm by Dr. Louise Hampson from York University about St Paul's Church and its links with Coventry Cathedral.

1000-1500 Talks at 1100 & 1300 • Prebooking not required.



61. The History and Architecture of Paradise Square

Paradise Square, Sheffield, South Yorkshire, S1 2DE

This tour will explore Paradise Square's history & architecture including its origins, buildings & stories of its inhabitants. It will also highlight the Chartists, the inn where the 'blind fiddlers' played, & Sheffield's first women's hospital.

1300-1430 • Prebooking not required.

62. The Old Rectory, Eckington

The Old Rectory, Church Street, Eckington, Derbyshire, S21 4BG

An opportunity to visit this grade II* listed Georgian mansion and its garden, once well known as the Rectory whose garden, once extensive, hosted many events from the C18 until the end of C20. The house has been restored and a new garden created.

1030-1630 • Book tours in the church on the day.

63. Town Hall Treasures

Town Hall, Surrey Street, Sheffield, South Yorkshire, S1 2HY

A rare chance to see some of Sheffield's unique civic treasures in the setting of the Town Hall Silver Room.

1100-1400 • Prebooking not required.



Our Natural Heritage

The Sheffield area is rich in green and blue heritage and we love to see this reflected in the Heritage Open Days (HODs) events which showcase our landscapes, rivers and wildlife.

This year you can visit community gardens, parks and open spaces such as Whirlow Brook Park, Meersbrook Park and Graves Park, and learn how to forage for mushrooms in the Rivelin Valley.

You can ramble with a trio of retired geologists in the Porter Valley, or discover the beauty of Lodge Moor and Redmires where the landscape once housed a military base, a prisoner-of-war camp, and an isolation hospital. Follow the mighty Don along the emerging Upper Don Trail, stroll along the Porter Brook, and see how the River Rivelin used to power the watermills as it flows down the valley.

The Shire Brook Nature Reserve, celebrating its 30th anniversary, is based around a former sewage works which closed in the early 1990s, following which a reclamation scheme turned the site into a wildlife area. Or get close to nature at RSPB Old Moor where you will see how natural habitats providing homes for a wide variety of birds have thrived in an area with a mining and industrial history.

Our city's historic cemeteries are often a rich source of wildlife and create an excellent environment for biodiversity to flourish both in rural and urban locations. Loxley Cemetery, Zion Graveyard, Sheffield General Cemetery, Burngreave Cemetery and Spital Cemetery in Chesterfield are all well worth a visit during HODs.

Our parks, rivers, nature reserves and green spaces are out there ready and waiting for you to explore this Heritage Open Days - enjoy discovering our wonderful natural heritage!



64. Trinity United Reformed Church

737a Ecclesall Road, Sheffield, South Yorkshire,
S11 8TG

Trinity United Reform Church will be open at 1000 until 1600 for visitors to explore the building on Saturday 20th. There will be a talk at 1400 by Clyde Binfield.

1000-1600 • Prebooking not required.

65. Walkley Carnegie Library

South Road, Sheffield, South Yorkshire, S6 3TD

An opportunity to learn about how the library has changed since it was built. Developing from a formal library service with separate reading rooms for ladies and gentlemen, to opening Sheffield's first children's library.

1000-1400 • Prebooking not required.

66. Walkley Community Centre Special Opening of this Historic Building

7A Fir Street, Sheffield, South Yorkshire, S6 3TG

Explore the architecture and features of the Edwardian former Walkley New Reform Club and meet the Walkley Historians. The Rivelin Valley Conservation Group will display photos and working models of mills and bridges & provide children's activities.

1230-1600 • Prebooking not required.

67. Walkley Ebenezer Methodist Church

Greenhow Street, Sheffield, South Yorkshire, S6 3TP

Walkley Ebenezer will be open to visitors who will be able to see the interesting features in the building, get to know how the building is used today and spend some time with our building users.

1300-1630 • Prebooking not required.

68. Walkley to Rivelin – the heritage and wildlife of the Rivelin Valley

7A Fir Street, Sheffield, South Yorkshire, S6 3TG

Volunteers from Rivelin Valley Conservation Group will explain how the fast flowing river Rivelin was used to power the watermills in the valley, where cutlery, tools and anvils were produced.

1230-1600 • Prebooking not required.

69. Walkley: Sheffield Buddhist Centre past, present and future

Howard Road, Sheffield, South Yorkshire, S6 3RT

Visit and learn about the history of an important Walkley building not usually open to the public with presentations on the architectural and social history of the buildings that have existed on the site and guided tours.

1000-1600 • Prebooking not required.





Sunday 21st September

70. Abbeydale Picture House

387 Abbeydale Road, Sheffield, South Yorkshire, S7 1FS

Join us for a guided tour of Abbeydale Picture House in the company of local historian Mike Higginbottom.

Tours 1100, 1300, 1500 • Prebook at
www.truenorthbrewco.uk

71. Chesterfield Architects and Victorian Grand Designs

Spital Cemetery Lodge, 19 Hady Hill, Chesterfield, Derbyshire, S41 0DZ

A guided tour around Spital Cemetery taking in aspects of the design, the lives of past architects and builders and a chance to explore the design of the chapels and entrance pier, all Grade II listed.

Architecture Tour 1400-1530 • Prebook via
[Eventbrite](https://www.eventbrite.com)

72. Yellow Arch Studios

Yellow Arch Studios, 30-36 Burton Road, Sheffield, South Yorkshire, S3 8BX

Yellow Arch Studios is one of the UK's top live music and recording venues. This tour tells its life from the 1870s as Clarence Works, part of Sheffield's traditional industries, to its current influential role in the music industry.

Tours 1130 & 1330 • Prebook via [Eventbrite](https://www.eventbrite.com)

For latest updates check: www.heritageopendays.org.uk



Multiple dates

73. A plan takes shape - the architecture of art and design

All Good Stuff at Butcher Works, 72 Arundel Street, Sheffield, South Yorkshire, S1 2NS

Artists and makers share how they create their work in an exhibition and in-person conversations and demonstrations in the historic Butcher Works Gallery. Meet the architect involved in the restoration of this Grade II* listed former cutlery works.

13th, 14th, 20th, 21st 1100-1600 • Prebooking not required.

74. Abbeyfield Park House & Garden: Eavesdropping, Constance & Change

Abbeyfield Road, Sheffield, South Yorkshire, S4 7AY

Abbeyfield House sits in one of the most well preserved examples of an extensive late Victorian private walled garden. We are offering tours through the house & the gardens in the context of the wider Pitsmoor landscape of the last 200 years.

13th & 20th 1100 & 1400, 4th & 21st 1400 • Prebook via [Eventbrite](#)

75. All Saints Ecclesall – explore the church, grounds, its history and heritage.

Ringlow Road, Sheffield, South Yorkshire, S11 7PP

Explore the Grade II listed church building, first built in the 18th century, and discover the 10 acres of church grounds, its vast array of nature, and over 10,000 graves. Come along for guided tours, displays, graveyard enquiries, family activities.

15th 1000-1230, 20th 1000-1600 • Prebooking not required.

76. Aston Reading Room

Aston Reading Room, Aughton Lane, Aston, Sheffield, South Yorkshire, S26 2AN

Display of local history documents, maps and photos. History of community and lives of servicemen in two World Wars. Research into graves in the churchyard and Aston Hall links to Capability Brown. Research into mining fatalities in local collieries.

12th 1800-2000, 13th 1000-1600 • Prebooking not required.

77. Battle of the Architects at Sheffield General Cemetery

The Samuel Worth Chapel, Sheffield General Cemetery, Cemetery Avenue, Sheffield, South Yorkshire, S11 8NT

Explore Sheffield General Cemetery's bold Victorian architecture through a programme of architecturally-themed exhibitions, guided tours, talks, and children's craft activities.

18th burial research 1030-1530. Tours 20th & 21st 1100 & 1500. Children's Activities 20th & 21st 1000-1600 • Prebook via [website](#)





78. Beauchief Abbey

Beauchief Abbey, Beauchief Abbey Lane, Beauchief, Sheffield, South Yorkshire, S8 7BD

A hidden gem, the oldest building in Sheffield - set in a peaceful site, surrounded by parkland. 12th Century Tower and 17th Century Box Pews.

20th & 21st 1100-1500 • Prebooking not required.

79. Birley Spa Bath House History Talk and Tour

Birley Spa, Birley Spa Lane, Hackenthorpe, Sheffield, South Yorkshire, S12 4ED

Guided tour of Sheffield's only Victorian Bath House with a spring-fed plunge pool. Learn about its colourful history, its importance in our city's working-class heritage and the wildlife that calls it home.

12th, 19th, 21st 1330 & 1500. 13th, 14th, 20th 1100, 1330, 1500 • Prebook by email fiona.birleyspa.pt@gmail.com

80. Broomhill Community Library - Exploring the Hidden Garden

Taptonville Road, Sheffield, South Yorkshire, S10 5BR

Take a tour of the Percy Cane Heritage Garden with garden historian Jill Sinclair and see the latest creativity by the garden team. Self-guided trail and treasure hunt for children available during the HODS festival.

13th, 15th, 16th, 17th, 19th, 20th 1000-1700, 17th tour at 1100 • Prebooking not required.

81. Broomhill to General Cemetery - Three Gardens Treasures Trail

Taptonville Road, Sheffield, South Yorkshire, S10 5BR

Self-guided trail starting at Broomhill's Percy Cane Heritage Garden on to Sheffield Botanical Gardens ending at Sheffield General Cemetery. A journey to discover about the design, special features, stories of the gardens and buildings on the route.

Collect trail from Broomhill Library or download from their website

82. Broomhill Community Library - Family Fun & Creative Experience

Taptonville Road, Sheffield, South Yorkshire, S10 5BR

A family event for school age children to make some imaginative structures with recycled materials and design a Minecraft world!

12th & 19th 1600-1730 • Prebook by email activities@broomhill-library.org.uk

83. Bullhouse Chapel

Bullhouse Lane, Millhouse Green, Sheffield, South Yorkshire, S36 9NF

This simple chapel that has met for independent Christian worship since 1692.

13th & 20th 1100-1300, 14th 1100-1300 & 1530-1630, 17th 1600-1800 (talk 1630-1730), 21st 1330-1430 & 1530-1630

Prebooking required for talk only, email suzannejwilliams@btinternet.com

84. Burton Street Foundation Tour

Burton Building, 57 Burton Street, Sheffield, South Yorkshire, S6 2HH

Visit the beautiful 1879 school buildings where our disability services are based, which were once derelict and threatened with demolition.

16th & 18th 1300-1500 • Prebook via [Eventbrite](#)

85. Conduit and Confinement - A Lodge Moor explore

51 bus terminus, Redmires Road, Sheffield, South Yorkshire, S10 4LJ

The beauty and history of Lodge Moor and Redmires. Reservoirs and conduit, a military base and prison camp, isolation hospitals and a racecourse, all formed a



remote outpost in years gone by, with much evidence of the past still to be found today!

14th 1400-1600, 18th 1100-1300 • Prebooking not required.

86. 'Drainspotting' - Sheffield's Victorian pavement features

Next Chapter Books, 7 Rustlings Road, Sheffield, South Yorkshire, S11 7AA

A look at the history under our feet. Discover the social heritage that we walk over every day.

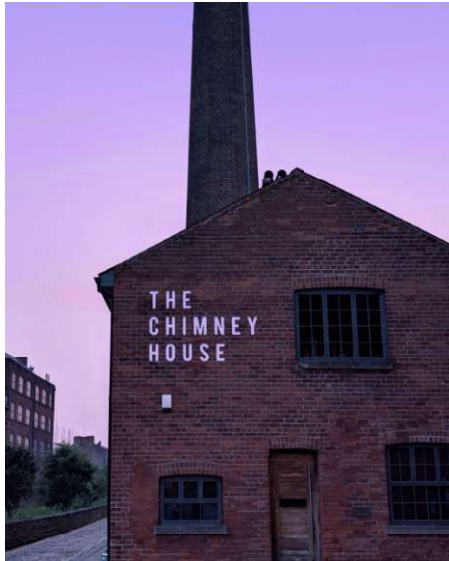
16th 1100-1300, 21st 1300-1500 • Prebooking not required.

87. Elder Yard Unitarian Chapel

Elder Way, Chesterfield, Derbyshire, S40 1UR

An unspoilt 17th Century Chapel (the oldest in Derbyshire), featuring original pews, altar and organ. Exceptional stained glass windows, a historical collection of Pearson's Pottery and artifacts not normally available to see. Historical graveyard.

12th & 13th 1000-1600. 14th 1430-1600 • Prebooking not required.



88. From Sewage Works to Nature Reserve: the Shire Brook Valley transformed

Shire Brook Valley Nature Reserve Visitor Centre, Stone Lane, Sheffield, South Yorkshire, S13 7BR

Established as a nature reserve in 1995, this year is Shire Brook Valley's 30th anniversary. Explore an exhibition showcasing the rich heritage and abundant nature. Get involved in creative activities inspired by the Art Deco style visitor centre.

18th & 21st 1100-1400 • Prebooking not required.

89. Graves Park: Architecture in this Historic Park

Graves Park, Top of Derbyshire Lane, Sheffield, South Yorkshire, S8 8QA

An exploration of the architecture in Graves Park, once Norton Park. A guided walk in Graves Park: Exploring the names, settlements, buildings and ancient routes through and around the park.

13th & 20th 1100-1300 • Prebooking not required.

90. Grenoside Crucible Steel Furnace

2 Topside, Grenoside, Sheffield, South Yorkshire, S35 8RD

Visitors will be able to explore the oldest crucible steel making furnace in South Yorkshire, dating from 1797.

14th, 15th, 18th 1400-1600 • Prebook by email glenswift12@gmail.com





91. Handsworth Museum and Dovecote

St Mary's Parish Centre, Handsworth Main Road, Handsworth, Sheffield, South Yorkshire, S13 9BZ

Handsworth Museum is situated in the stable range adjoining St Mary's Parish Church, dating back to circa 1800. It is a registered Grade II listed building.

12th, 13th, 14th, 15th 1000-1600 • Prebooking not required.

92. Harmony Works at Canada House: Pop-up Urban Room exhibition

Canada House, 11 Commercial Street, Sheffield, South Yorkshire, S1 2AT

Discover the Victorian grandeur of Canada House, once the headquarters of the Sheffield United Gas Light Company with a pop-up urban room exhibition.

13th, 14th, 17th, 18th, 21st 1100-1730 • Prebooking not required.

93. Harmony Works at Canada House: Tours

Canada House, 11 Commercial Street, Sheffield, South Yorkshire, S1 2AT

Guided tour of the Victorian grandeur of Canada House, once the headquarters of the Sheffield United Gas Light Company. Learn about its colourful history: its role in WWII, its reincarnation as an '80s nightclub, and then a Chinese Buffet in the 2000s.

**14th tours 1200-1245, 1400-1445, 1600-1645
Urban Room exhibition 1100-1730**

20th accessible ground floor tour 1030-1100

Prebook at <https://harmonyworks.org.uk/events>

94. Hemingfield Colliery Open Days, Exhibition and Tours

Hemingfield Colliery, Wath Road/Pit Row, Barnsley, South Yorkshire, S73 0NX

Visit this surviving Victorian colliery site. Sunk for Earl Fitzwilliam in the 1840s as Elsecar Low pit, working the Barnsley seam until 1920 when it was converted into a pumping station and survived the closure of the industry. Run by volunteers.

13th, 20th 1030-1530, 14th, 21st 1100-1500 • Prebooking not required

95. Historic Buildings and Collections at the University of Sheffield

Western Bank, Sheffield, South Yorkshire, S10 2TN

During the weekend of 13 & 14 September the University of Sheffield will be running tours of some of its iconic buildings and museums. Come along and hear about the University's history, its research both old and new, and see some of its collections.

13th, 14th tours & museum 1000-1630, 16th & 18th Turner Museum of Glass 1030-1630

**Prebooking required via email
jean.simpson@sheffield.ac.uk**





96. Little Mesters at Work - Leah's Yard Heritage Tour

Cambridge Street, Sheffield, South Yorkshire, S1 4HP

A rare guided tour led by Philip Drury, former owner of F Drury & Sons Silversmiths & the last industrial tenant. Discover the hidden workshops, industrial features & rich history of Sheffield's Little Mesters: a glimpse into the past.

13th & 20th 1100-1245 • Prebook via [Eventbrite](#)

97. Mayfield Wesleyan Reform Church

Mayfield Wesleyan Reform Church, Mayfield Road, Sheffield, South Yorkshire, S4 7AU

The chapel will be open for visitors to see the interior of the 125 year old building, and the triptych representing the local area by local artist Ros Norsworthy.

12th & 13th 1030-1600 • Prebooking not required.

98. Meersbrook Park Walled Garden Sheffield

Meersbrook Park, Brook Road, Meersbrook, Sheffield, South Yorkshire, S8 9FH

Visit the historic Walled Garden in Meersbrook Park in Sheffield with its 200 year old wall and see the huge variety of plants and shrubs. The garden is lovingly maintained all year round by a hardy group of volunteers from the local friends' group.

14th & 21st 1400-1700 • Prebooking not required.

99. Mortuary Chapel in Burngreave Cemetery

North Chapel, Burngreave Cemetery, Melrose Road, Sheffield, South Yorkshire, S3 9DN

Mortuary Chapel building with two chapels connected by Clock Tower and Spire. Designed by William Flockton and Sons in 1861. Normally locked as not used for funerals. See our website for further info.

13th & 20th 1200-1500, 14th, 17th, 21st 1000-1500 • Prebooking not required.

100. National Emergency Services Museum - Architecture, The first 999 Hub

The Old Fire Station, 101-109 West Bar, Sheffield, South Yorkshire, S3 8PT

The year 2025 marks 60 years since the closure of the operational station the museum now calls its home. Join us as we examine its Victorian architecture, the story behind the building, and its advanced technology at the time.

13th, 19th, 21st 1100-1230 & 1330-1500

Prebook at <https://www.visitnesm.org.uk/hods>

101. Notable Sheffield Women Walk: From Anglican Priest to Lady Mayoress

Church Street, Sheffield, South Yorkshire, S1 1HA

One of two walks around the centre of Sheffield that chart the struggles and celebrate the successes of pioneering women who, from the 1770s onwards, adopted increasingly visible and prominent roles in Sheffield public life.

12th, 14th, 16th, 18th, 20th 1030-1200 •

Prebook via [Eventbrite](#)

102. Notable Sheffield Women Walk: From Local Councillor to Solicitor

Town Hall, Surrey Street, Sheffield, South Yorkshire, S1 2HY

One of two walks around the centre of Sheffield that chart the struggles and celebrate the successes of pioneering women who, from the 1770s onwards, adopted increasingly visible and prominent roles in Sheffield public life.

12th, 14th, 16th, 18th, 20th 1300-1430 •

Prebook via [Eventbrite](#)



103. Open Dore - Dore Masonic Hall

Dore Masonic Hall, Woodland View, Abbeydale Road South, Sheffield, South Yorkshire, S17 3LA

Visit the iconic building on Abbeydale Road South, what is the history of Dore Masonic Hall? Discover the links between the Sheffield & Rotherham LVA, Sir Francis Leggatt Chantry, J.B.V. Mitchell-Withers & Sons (Architects) and Burton upon Trent.

13th & 14th 1000-1530 • Prebooking not required.

104. Sheffield Curios & Quizzical

The Famous Sheffield Shop, 475 Ecclesall Road, Sheffield, South Yorkshire, S11 8PP

Take advantage of our knowledge to discover family links to Sheffield cutlery, identify objects, their use & makers. Learn how to clean, care for and sharpen your items. Meet today's makers. Take part in our Sheffield quiz & prize draw.

Monday to Saturday 1930-1700 • Prebooking not required.

105. Sheffield Hospitals History Collection

Northern General Hospital Heritage Centre, Central Lane, Herries Road, Sheffield, South Yorkshire, S5 7AU

This is a rare opportunity for visitors to see old hospital instruments and equipment as well as portraits, busts and photographs relating to the history of the Sheffield Hospitals.



20th & 21st 1000-1130, 1200-1330, 1430-1600 •

Prebooking required by email
sheffhgh@gmail.com

106. St Andrews URC Open Day

St Andrew's URC, 84 Upper Hanover Street, Sheffield, South Yorkshire, S3 7RQ

Designed by well-known Sheffield architects Flockton & Sons in Victorian Gothic style, it was opened in 1855 as a Presbyterian Church of Scotland to provide for Scots settlers and a Scots regiment about to be billeted nearby.

19th 1300-1600, 20th 1100-1600 • Prebooking not required.

107. St Giles Church, Killamarsh

Kirkcroft Lane, Killamarsh, Derbyshire, S21 1BS

Beautiful 12th century parish church with some interesting features and history. Magnificent stained glass windows, including a memorial window to those who lost their lives in two world wars. Norman font. Tower housing 6 bells.

13th 1000-1600, 14th 1200-1600 • Prebooking not required.

108. St Leonard's Church Wortley

St Leonard's Church, Wortley Village, Halifax Road, Barnsley, South Yorkshire, S35 7DB

Explore the church and churchyard. The church dates from 1753 and contains monuments and memorials to the Wortley family (the Earls of Wharndiffe). The church tower will be open for guided tours to see the bells and a demonstration of bell ringing.

17th & 20th 1030-1600 • Prebooking not required.

The University of Sheffield

Sheffield's oldest university, founded in 1905, is not only an internationally famous centre of academic excellence, it also houses many rare collections and exhibitions within its historic and modern buildings.

This year we are delighted that the University will be running new tours and exhibitions especially for Heritage Open Days, where you can hear about the University's history, its research both old and new, and see some of its collections.

There will be chance to visit the majestic Firth Hall and Rotunda (the University's original college and library) and to tour the Grade II listed Mappin Building and adjoining Heartspace which strikingly contrast the old and the new in architecture and design.

Don't miss the 'fantastical' Alfred Denny Museum, home of an impressive collection of taxidermy, whilst the Turner Glass Museum boasts a fabulous collection of early 20th century glass objects and later acquisitions. The University's Western Bank Library will also be hosting an exhibition and a talk on Architecture.

Take the chance to visit behind the scenes at the University of Sheffield this Heritage Open Days and see what makes it both a world top-100 university and an iconic example of our city's built and cultural heritage.

For latest updates check: www.heritageopendays.org.uk



109. St Marie's RC Cathedral

Norfolk Row, Sheffield, South Yorkshire, S1 2JB

A Victorian masterpiece was how this sacred building was described when opened in 1850. Built just off the main thoroughfare this centre of Catholic worship is haven of prayer, peace and magnificent architecture.

See [website](#) for tour timings • Prebooking not required.

110. St Mark's Church, Broomhill & Broomhall

St Mark's Church Sheffield, Broomfield Road, Sheffield, South Yorkshire, S10 2SE

A chance to visit to the architect George Pace's finest parish church with its stained glass by John Piper and Patrick Reyntiens and Gillian Rees-Thomas and Harry Stammers. Celebrating St Mark's role as an eco-congregation.

16th 1300-1700, 19th 1000-1400 • Prebooking not required.

111. St Mary's Church Ecclesfield

Priory Road, Ecclesfield, Sheffield, South Yorkshire, S35 9XZ

Church open to visitors to look around the building, enjoy a very historical building and meet other visitors.

19th & 20th 1000-1600, 21st 1200-1600 • Prebooking not required.



112. St Matthew's Church, Carver Street

45 Carver Street, Sheffield, South Yorkshire, S1 4FT

Historic St Matthew's Church in the heart of the city is a beautiful example of the English Anglo-Catholic or 'Ritualist' movement. Full of gorgeous features lovingly maintained this church will transport you to the Baroque and the Gothic.

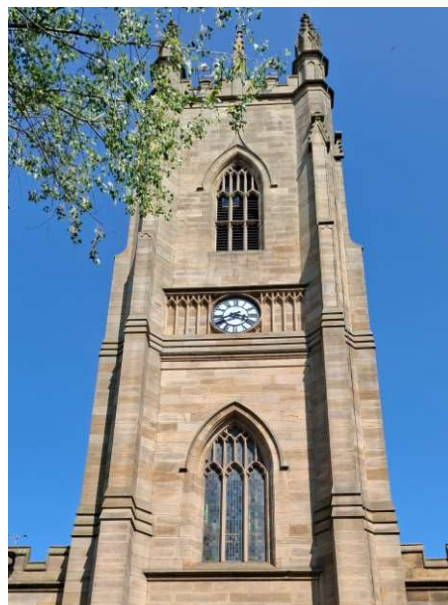
12th, 15th, 16th, 17th, 18th, 19th 1000-1700. 13th & 20th 0930-1500 • Prebooking not required.

113. Step Into the Story: The Lantern Revealed

Lantern Theatre, 18 Kenwood Park Road, Sheffield, South Yorkshire, S7 1NF

Explore The Lantern, a unique Victorian theatre in Sheffield. Discover hidden corners, architectural quirks, and theatrical tales on a guided tour of our 1893 building, from stable block to spotlight.

17th & 20th Tours 1000, 1100, 1300, 1400 • Prebook via [Ticketsource](#)





114. Renishaw Hall's stunning Italianate Gardens and Historic Eckington

Eckington Library, Market Street, Eckington, Derbyshire, S21 4JG

A guided walk from Eckington Library along Southgate noting some of the earliest and most prestigious buildings in the village, to enter the main gates of Renishaw Hall for a tour of its Italianate gardens led by the Head Gardener David Kesteven

12th & 19th 1100-1300 • Prebook by email
lainychambers@gmail.com

115. RSPB Old Moor, Dearne Valley Heritage Exhibition and Talk Series

Old Moor Lane, Wombwell, Barnsley, South Yorkshire, S73 0YF

Exhibitions and talks by RSPB Old Moor; Elsecar Heritage Centre, Doncaster Archives, Friends of Hemingfield Colliery and football historian Chris Brook. All talks are 'book in advance'. All events take place in the RSPB Old Moor Activity Centre.

12th to 21st, exhibition 1000-1615. Talks on 12th, 14th, 15th, 19th 1515-1615 • Prebook talks by email alvin.hickling@rspb.org.uk

116. Sandygate and Carsick - Social history and world sporting heritage

Sandygate Road, Sheffield, South Yorkshire, S10 5SE

Explore Sandygate and Carsick, looking at the streets and buildings, and tracing part of the 1830s water works conduit that ran from Redmires. The event will conclude with a visit to Hallam FC's Sandygate Ground - the world's oldest football stadium!

Friday 12th 1400-1630, Friday 19th 1730-2000 • Prebooking not required

117. Sheffield Old Town - Echoes of the Past

Sheffield Cathedral, Church Street, Sheffield, South Yorkshire, S1 1HA

Walk around centre of Sheffield looking at existing buildings and their history and associated historical events.

12th & 18th 1030-1230 • Prebook via [Eventbrite](#)

118. Sheffield Street Art

Shalesmoor Tram Stop, Sheffield, South Yorkshire, S3

Kelham Island and Neepsend are major hubs of Sheffield's thriving official Street Art scene. This walk features roughly 70 exhibits.

14th & 21st 1100-1300 • Prebook via [Eventbrite](#)

119. St Giles Church, Killamarsh

Kirkcroft Lane, Killamarsh, Derbyshire, S21 1BS

Beautiful 12th century parish church with some interesting features and history. Magnificent stained glass windows, including a memorial window to those who lost their lives in two world wars. Norman font. Tower housing 6 bells.

13th 1000-1600, 14th 1200-1600 • Prebooking not required.

120. The Parish Church of St Mary the Virgin Handsworth Sheffield

Handsworth Road, Handsworth, Sheffield, South Yorkshire, S13 9BZ

Beautiful stained glass windows and Icons; flower displays, displays by the bell ringers and Sword Dancers and there will be a well dressing. Handsworth Museum will be open at the same time. Situated on site in our hub.

12th, 13th, 14th, 15th 1000-1600 • Prebooking not required.



I21. Tours of Portland Works

Portland Works, Randall Street, Sheffield, South Yorkshire, S2 4SJ

Please note booking is required for this event

Portland Works is a fascinating Grade II* listed former Victorian Cutlery Works. We are opening for booked tours only. Take in the view from the flat roof and take a peek inside workshops.

13th 1030-1230, 16th 1400-1600, 18th 1700-1900 • Prebook via [Eventbrite](#)

I22. Upper Chapel & Channing Hall (Unitarian)

Norfolk Street, Sheffield, South Yorkshire, S1 2JD

Take a tour around one of the oldest buildings in Sheffield and discover what a peaceful jewel the Chapel is. Dating from 1700, it is infused with stories connected to Sheffield's people, development and rich history.

12th & 13th 1100-1530 • Prebooking not required

I23. Walk the Streets in the Sky at Park Hill

South Street, Sheffield, South Yorkshire, S2

Explore this iconic Grade II* listed building, walk the 'Streets in the Sky' and take in its grand views of Sheffield.

13th 1030 & 1330, 18th 1800, 20th 1030 & 1330 • Prebook via [Eventbrite](#)

I24. Wood Tools at Beehive Works

Beehive Works, 90 Milton Street, Sheffield, South Yorkshire, S3

A chance to visit this historic Grade II* listed Victorian cutlery factory, and see displays of traditional grinding at the home to Sheffield's last remaining hand-grinders, Wood Tools.

Grinding demonstrations: 15th, 16th, 17th, 18th, 19th 1000-1300, 20th & 21st 1000-1600 • Prebooking not required.

I25. Worsbrough Local History Days

Park Road, Worsbrough, Barnsley, South Yorkshire, S70 5LJ

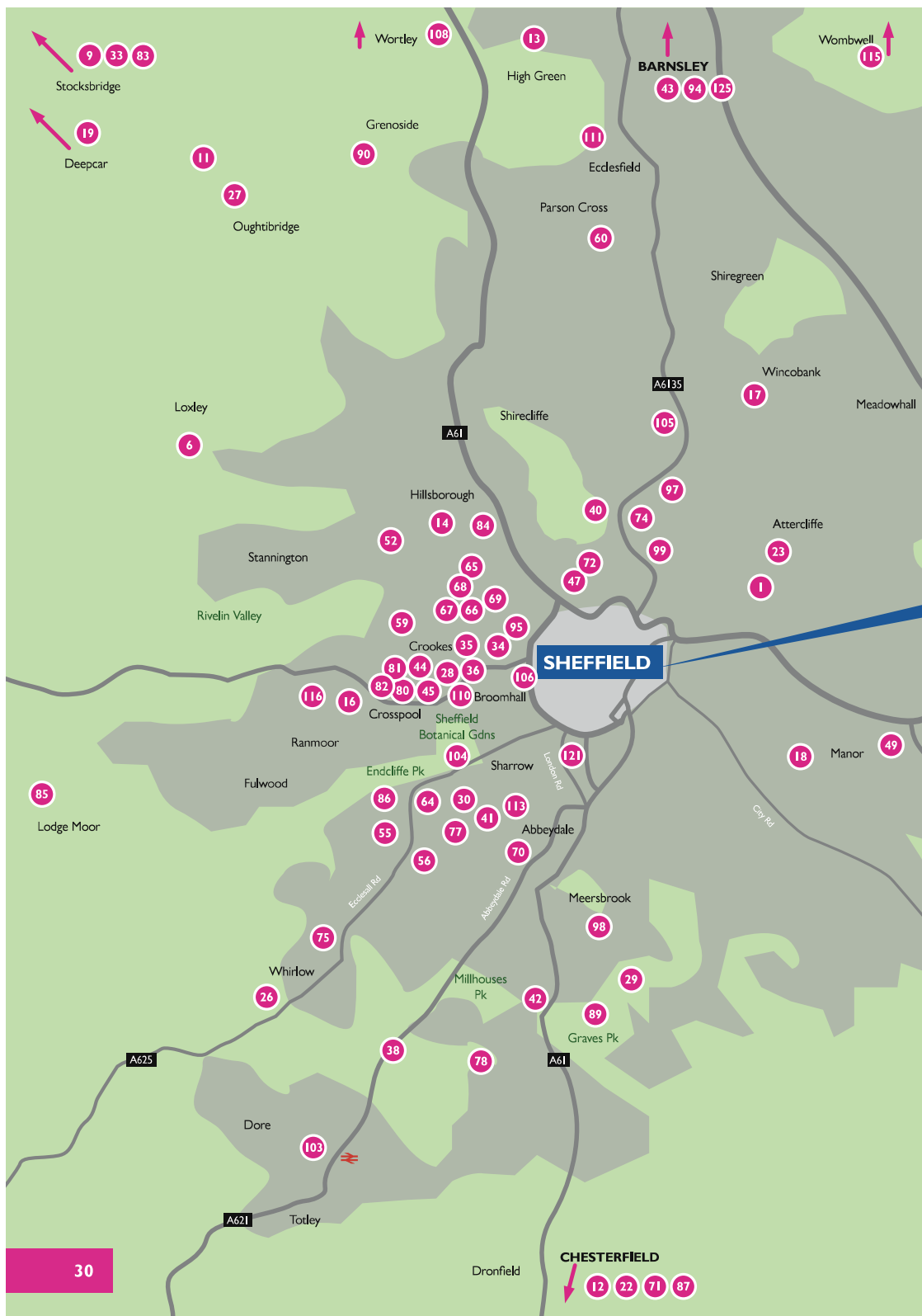
Two-day history event celebrating Worsbrough's wonderful architecture and the rich industrial and social heritage. There will be several exhibitions and family friendly activities as well as guided tours of the Mill building.

13th & 14th 1000-1400 • Prebooking not required.

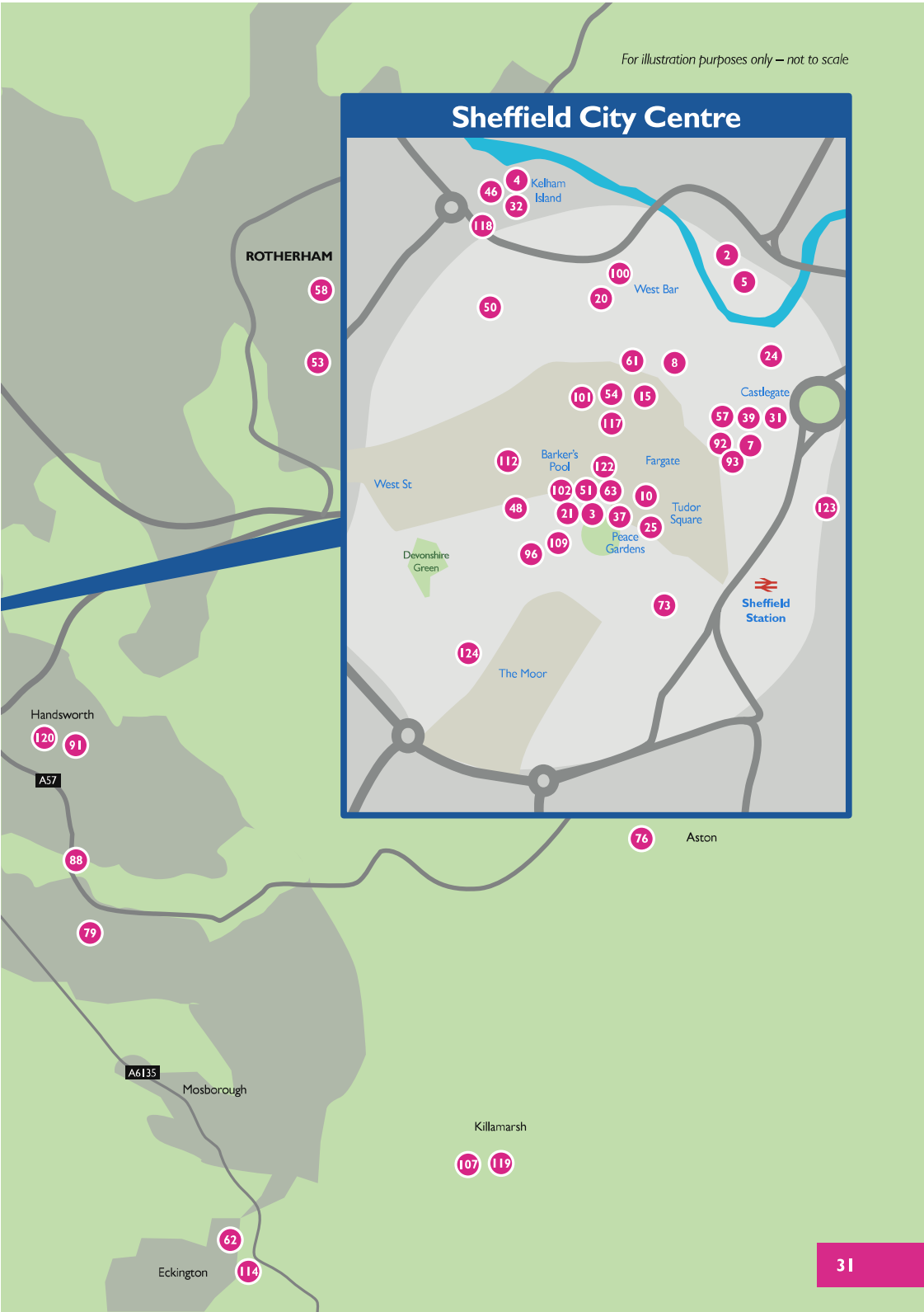




For latest updates check: www.heritageopendays.org.uk



For illustration purposes only – not to scale



Competition!

On the front cover there's a tantalising glimpse of nine Sheffield buildings. Can you identify them all? If so, you have a chance to win an iconic Sheffield-made stainless steel 'Round Tuit' – perfect for those who 'never get around to it!'



With thanks to The Famous Sheffield Shop.

How to enter:

Drop us an email with the subject line 'Competition', identifying the nine buildings and including your name. If there's more than one correct entry then a draw will be made to choose the winner. Competition closes on the last day of the festival, Sunday 21 September 2025. Good luck!

Email: hods@sheffieldcivictrust.org.uk

 facebook.com/sheffieldheritageopendays

 [@sheffield_hods](https://twitter.com/sheffield_hods)

 [#sheffieldhods](https://www.instagram.com/sheffieldhods)

www.heritageopendays.org.uk

www.sheffieldhods.com

Introduction and articles by Janet Ridler

Brochure design by Alex Storer, IDFP Creative Design

Printed by People For Print, Sheffield